

Aero

ARCHITECTURAL HEAD



AERO WITH ROUND GLASS SHIELD ACCESSORY
Shown approximately 35% actual size.



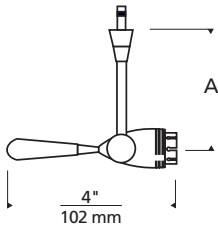
AERO WITH MOONLET AND WOOD HANDLE ACCESSORY



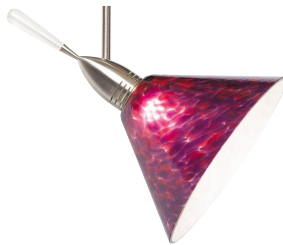
AERO WITH BELL ACCESSORY



AERO WITH DICHROIC GLASS SHIELD ACCESSORY



Socket terminates with FreeJack male connector, which may be installed into a system connector. Elements ordered with a system prefix include a connector for that system.



AERO WITH MARTINI GLASS SHIELD ACCESSORY



DESCRIPTION

Aero's head rotates 360°, pivots 260° to direct the beam. Removable glass handle. Accessories in myriad styles and colors allow you to create the ideal custom element (accessory required; sold separately).

SYSTEM

Available for FreeJack, MonoRail, Two-Circuit MonoRail, and Wall MonoRail. For use on T-trak, order FreeJack version and T-trak FreeJack Connector (sold separately).

COLOR

None.

FINISH

Antique bronze, chrome, satin nickel.

LAMP

Low-voltage Halogen MR16 lamp up to 50 watts (not included). See accessory for maximum wattage usage.

ACCESSORIES AND OPTICAL CONTROLS

Accessory required. Compatible accessories and optical controls (sold separately): Cone, Dichroic, Firebird, Martini, Prism, Round or Soda Glass Shield; Bell, Belladonna, Droplet, Lil Egypt, Meteorite, Moonlet, Scavo, Sugar or Tinkerbell, plus Wood Handle Accessory (below).

WEIGHT

0.55-1.00 lb./0.25-0.45 kg. ±

ORDERING INFORMATION

700	SYSTEM	AE	LENGTH (A)	FINISH
FJ	FREEJACK		3 3"	Z ANTIQUE BRONZE
MO	MONORAIL		6 6"	C CHROME
MO2	TWO-CIRCUIT MONORAIL		12 12"	S SATIN NICKEL
WMO	WALL MONORAIL		24 24"	

WOOD HANDLE ACCESSORY

ORDERING INFORMATION

700AERWOOD	LENGTH (A)	FINISH
W WALNUT		Z ANTIQUE BRONZE
N STAINABLE BARE		C CHROME
		S SATIN NICKEL



333 Buckhead Avenue
Atlanta, GA 30305-2305
phone: 404.760.1119
fax: 404.760.0797
www.clighting.com

hds_aero_spec.pdf

August 2007 Specifications subject to change without notice.



700 _____ AE _____

700AERWOOD _____

FIXTURE TYPE: _____

JOB NAME: _____